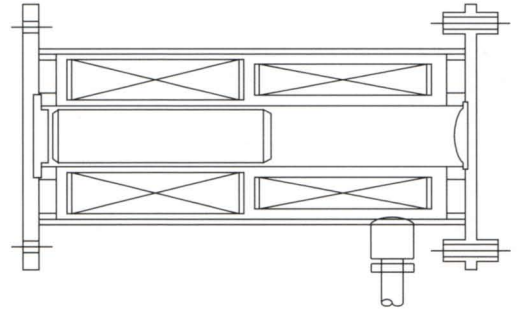
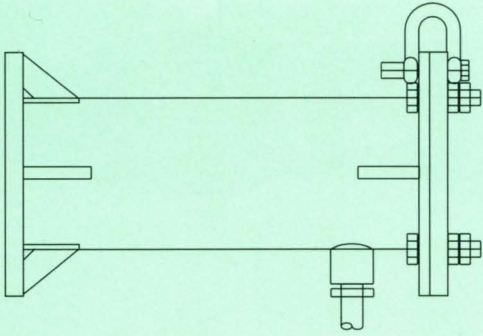


MAGHAMMER® outer appearance

MAGHAMMER® internal structure

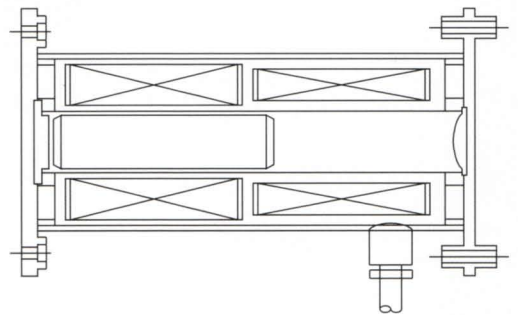
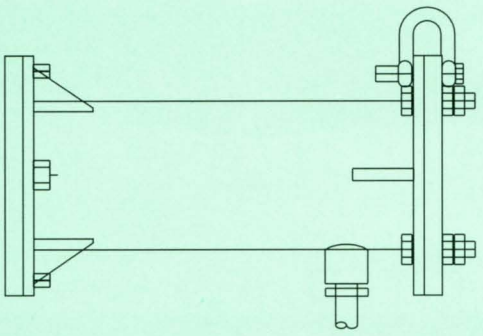
Standard type (SIC-A)

Powerful impact with stainless steel impact plate.



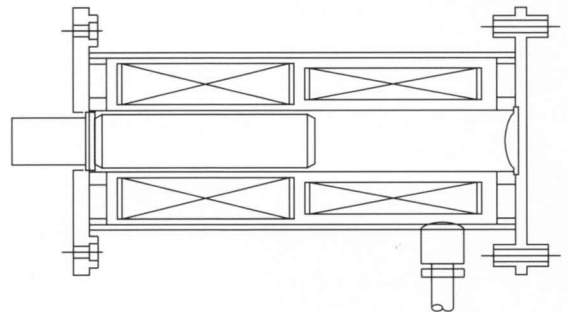
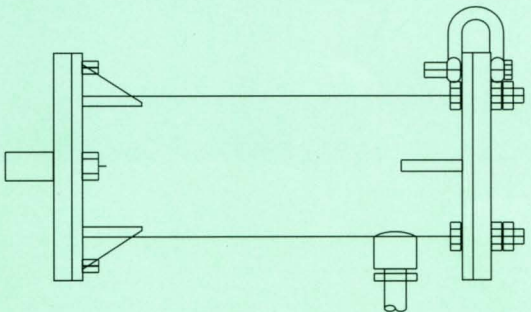
Sound-proof type(SIC-AS)

Lower noise level with rubber impact plate.



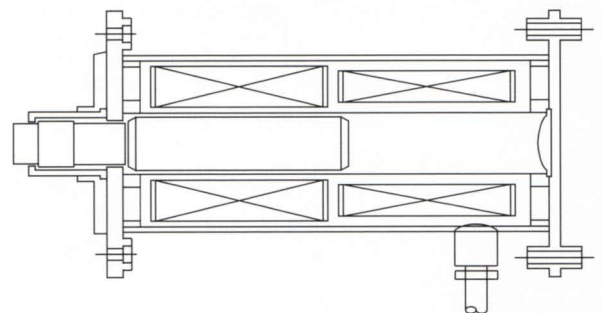
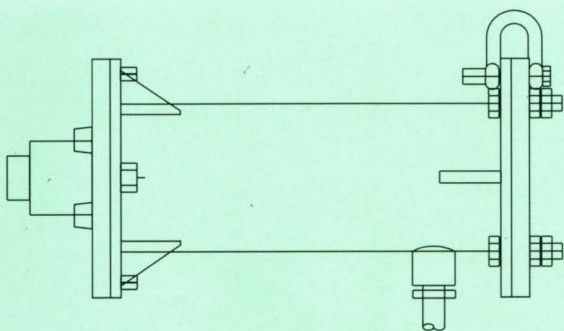
Piston-extruded type (SIO-A)

Suitable to hitting rotating mixers.

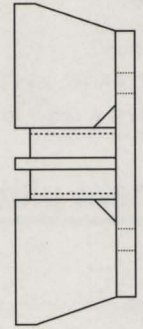
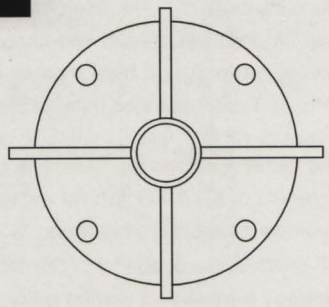


Direct impact type (SIS-A)

Suitable to hitting shafts of electric dust collectors as extra impact.

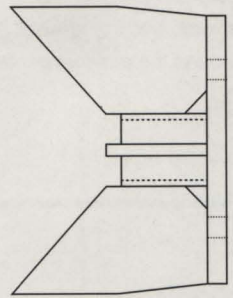
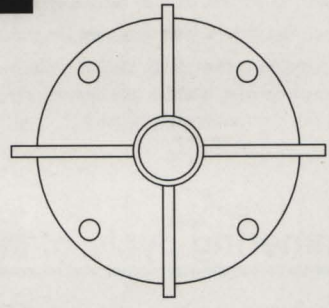


Flat surface



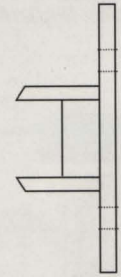
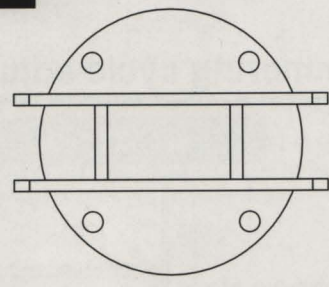
Pyramid hopper
Pyramid chute

Round surface



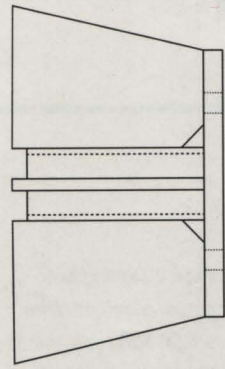
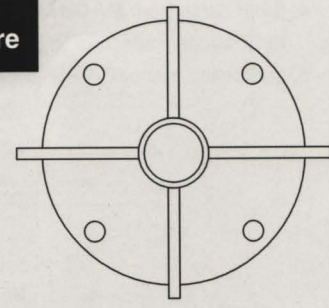
Conical hopper
Round chute

Small size pipe



Small size pipes

Flat surface with high temperature

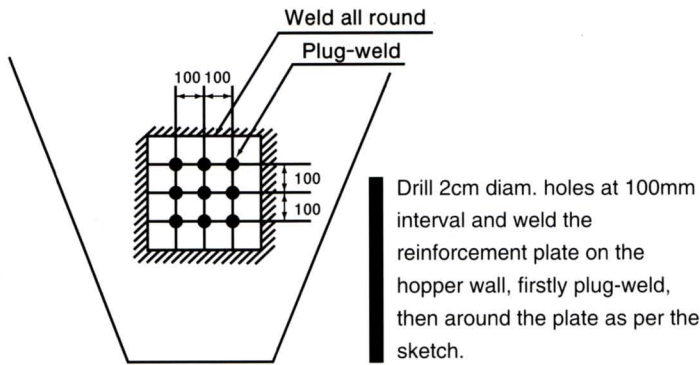


[For High temperature]
Available for flat & round surfaces, small size pipes, etc.

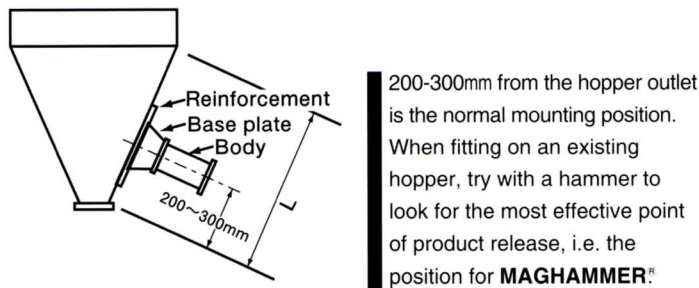
How & where to fit

- (1) Weld the reinforcement plate of 4-6mm thick onto the hopper surface if the hopper wall is thin.
- (2) Weld all around the base plate onto the hopper wall or to the reinforcement plate.
- (3) Fit the body onto the base plate with bolts & nuts.
- (4) Whenever **MAGHAMMER**[®] is fitted at a higher level, take the safety measure to prevent it from falling by attaching a chain or wire to the safety shackle.

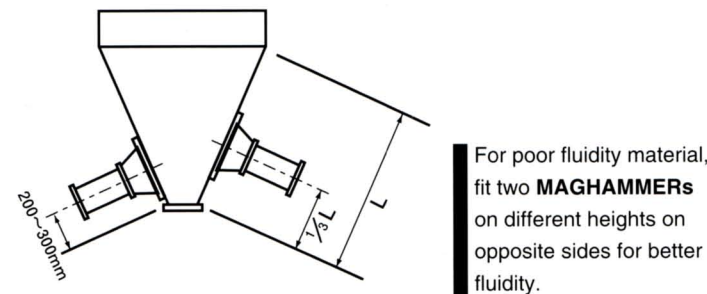
How to mount reinforcement plate



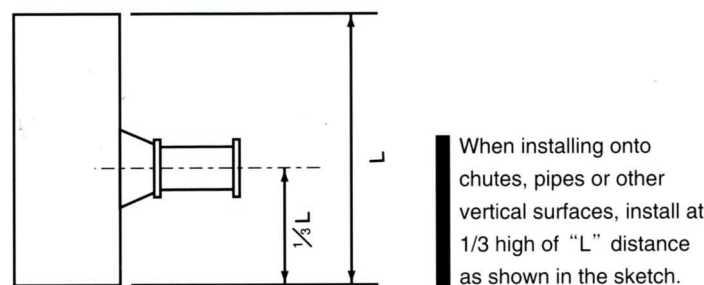
Normal installation



Poor fluidity material



Vertical installation



Operation

- (1) Plug in the power source and switch on the breaker (MCB) of the controller-control panel light on.
- (2) Selector switch can select "Auto", "Off" or "Remote".
 - a. [Auto switch]
Can hit once per second and choose hitting frequency, 1 to 10 by dialing. After hit (or hits) it pauses 30 sec. to 10 min. by setting "Pause Timer" and then repeats the same operation automatically.
 - b. [Remote switch]
The same operation as "Auto" is available if switch is on between terminals of XC & XO with no voltage contact. Continuous hitting is available if switched on between XC and X1 terminals.
- (3) When pressing the button for "Continuous Hit" on the control panel, continuous hammering can be done on either position of "Auto" or "Remote".
- (4) Impact force can be changed by adjusting both dials of "Mounting Direction" and "Impact Magnitude".
"Mounting Direction" dial indicates the direction of the **MAGHAMMER**[®] body installed, upward, downward or horizontal. Set it on 0-6 for upward, 6 for horizontal and 6-8 for downward. In case of 60° angle hopper, set it on 5 with "Impact Magnitude" at 5 to 10 in normal case.
※SN type controller: With switch on between terminals of XC & X1 with no voltage contact, it works one hammering per second. With switch off between XC & X1, no hammering is done.

Hammering cycle of MAGHAMMER[®]

MAGHAMMER[®] is not of continuous rating. **MAGHAMMER**'s maximum operation ratio is one hammering per 3 seconds. For example, after 10 times of hammering, the pause of 20 seconds is required. Continuous hammering should be limited within one minute. After one minute continuous hammering, the pause of two minutes is required.

Hammering cycle adjustment

SB type is preset for 4 time continuous hammering. It can be adjusted from 1 to 10 times by selecting "Hit Time" dial.

Accessories

- | | |
|---|--------|
| 1. Base plate | 1 pc |
| 2. Fitting bolts & double nuts | 1set |
| 3. Safety shackle for prevention of falling | 1 pc |
| (attached to the body) | |
| 4. 5-mtr cable from MAGHAMMER [®] | 1 pc |
| to Controller (attached to the body) | |
| 5. Instruction manual | 1 vol. |